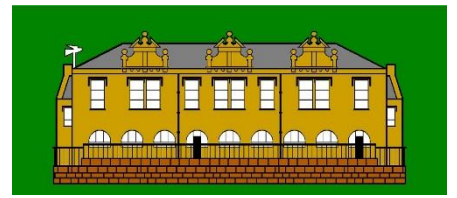




Trust Business Manager
Mrs J Burton



Luddendenfoot Academy
Burnley Road
Luddendenfoot
Halifax
HX2 6AU
01422 882298
Executive Head
Mrs. R. Denham

8th January 2021,

Dear Parents/Carers,

Further to the letter I sent out yesterday I am writing again to ask that any key workers who are able to make provision for their children to stay at home do so with immediate effect. One of the main concerns throughout this whole pandemic is being able to support our frontline workers. It is our priority to be able to continue to provide support to these families during the current lockdown. By allowing a high number of children to continue to attend school we are increasing the risk of transmission which in turn could then impact on staffing. If staff become ill it will not only affect our ability to teach directly in school but also remotely at home.

You will have also received an urgent update from Calderdale with a stark warning from the local Public Health Team of the seriousness of the current situation in Calderdale.

We have a current window of opportunity to take robust action now to slow the rate but it needs everyone in our school community to understand that we need to keep the numbers of children in school as low as possible. Both the DfE and Calderdale Council are clear that key workers should keep their children at home if they can. As I have stated previously we currently have 80 children registered for key workers places in school, we need to act now.

Next week will be looking to reduce the number of children in school, providing a place for those children's whose parents work is critical to the Coronavirus response. If the guidance around key worker places has lacked clarity, I apologise as I am responding to daily changing information both nationally and locally. Today though, it seems that the message is clear. Stay home. Protect the NHS. Save Lives.

Due to the urgency of this situation, I ask that you email KWLuddfoot@brigherfuturesmat.org.uk this evening if you can make arrangements to keep your child/children at home and you no longer require a place in school. Please take time for serious consideration. If we do not see a reduction in the number of children attending school next week, we will have to move to applying the NAHT criteria, as recommended by the Local Authority, which is:

Priority 1: Vulnerable children (Parents of these children will have already been contacted).

Priority 2: children where **both** parents are key workers or children with single parents who are key workers. NHS and education key workers to take priority.



Priority 3: Children where only one of two parents is a key worker. NHS and education key workers to take priority.

I know this is a difficult time for many of our families, but by working together we will hopefully be back together soon.

Kind regards,

Carolyn Greenwood