

Luddendenfoot Academy Newsletter

“Be all you can be”

NEWSLETTER – w/c 15.10.18

Class Attendance w/c 08.10.18

1st – Y3 = 100%

Y2 = 100%

3rd – FR = 99.3%

4th – Y6 = 98.6%

5th – Y5 = 96.5%

6th – Y4 = 95.2%

7th – Y1 = 94.5%

Well Done – Y3 & Y2!

Parking: SAFETY NOTICE REMINDER

When dropping off and collecting children, please not to compromise the safety of children by parking on the no drop off areas – outside of school as it makes it especially difficult for HGV/Buses to pass the school safely.

We have also received complaints from local residents regarding parking across driveways, and across access to the private road opposite school. Please can we ask that when **choosing where to park you are respectful to local residents** who also need to be able to enter and exit safely and are not unnecessarily delayed in their journeys. Thank you in advance for your co-operation.

Secondary Applications – September 2019

Online admissions can be made from 18 June until the closing date of **31 October 2018**. You will be able to view, as well as amend your online application any time throughout this period up to 31 October 2018.

Do not complete a Calderdale online application if you are not a Calderdale resident.

Diary Dates

- 17th Oct: FR Jerusalem Farm visit
- 18th Oct: Y1 visit to Eureka
- 18th Oct: Y3 CSI Forensic Workshop Day
- 19th Oct: Y6 – Class Assembly @ 2.30pm
- 22nd Oct: KS1 Assembly (Y1/2) @ 2.30pm
- 22nd Oct: Y2 visit to Manor Heath
- 23rd Oct: Y3 Class Assembly @ 2.30pm
- 23rd Oct: Flu Vaccination FR – Y5 (am)
- 24th Oct: Y4 Class Assembly @ 2.30pm
- 24th Oct: FR/Y1/Y2 – Halloween Disco 3.15-5pm**
- 25th Oct: Y5 Class Assembly @ 2.30pm
- 25th Oct: Y3-Y6 Halloween Disco 3.15-5pm**
- 25th Oct: Y5 Tree planting
- 26th Oct: FR Class Assembly @ 2.30pm
- 26th Oct: Starlight Collection
- 29th Oct – HALF TERM
- 5th Nov: INSET Day (school closed)
- 6th Nov: School reopens**
- 8th Nov: PTFA meeting @ the Weavers 8pm
- 13th Nov: FR Sept 2019 Intake – Parents’ Open Evening @ 6.00pm
- 12th-14th Nov: Y4 Robinwood Residential
- 15th Nov: PTFA Quiz Night @ the Weavers**
- 16th Nov: Children In Needs – Do your Thing!
- 19th Nov: Individual & Siblings Photographs (am)
- 26th Nov: Parent Consultation evening 3-6pm
- 28th Nov: Parent Consultation evening 3-6pm

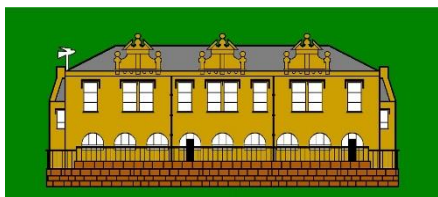
Starlight – Donation

Plastic collection bags will no longer be issued for your donations to support/help fight the catastrophic effect of waste on our planet. Please use supermarket carrier bags, bin liner or shop bag, to bring your clothes to school.

Our donations will be collected from school on **Friday 26th October**. Due to the limited available space in school to store donations, please can we ask that bags are not dropped off until Monday 22nd Oct at the earliest. Thank you.

Luddendenfoot Academy Newsletter

“Be all you can be”



Lost property

We are already gathering a large amount of lost property without names that needs claiming. Please add your child's name/Initials or other form of identification to their uniform to help get it back to who it belongs to!
Thank you.

Attendance – POLITE REMINDER

The national attendance figure set by the DfE requires schools to be achieving at least 96%. As you are already aware no holidays are authorised during term time other than those deemed as exceptional circumstances and may incur a penalty notice referral to the Local Authority. All requests for holiday absence must be requested in advance and sent for the attention of the Head of School: Mrs. Webb. It is also worth noting, that the school's overall OfSTED grading can also be negatively affected should attendance be below the national figure.
Thank you for your anticipated consideration.

Primary School Application 2019

Online applications can be submitted between 19th November 2018 and 15th January 2019 at www.calderdale.gov.uk/admissions
Parents/guardians will be able to view/amend their online application up until the 15th January 2019
Deadline for **submitting applications is 15th January 2019.**

All applications received after this date will be treated as late and will be considered after all applications received before the closing date.

National Offer Day – 16th April 2019.

PTFA Update

Next meeting will be, **Thurs 8th Nov, 8pm at the Weavers.** Everyone welcome, you don't need to be a committee member of the PTFA. We appreciate not everyone can make these meetings, so if you have anything you would like rising or any have any suggestions please either contact us via our Facebook page Luddendenfoot Academy PTFA, leave us a message with the school office, or have a chat with us in the playground.

Halloween Discos

Reception/Year1/Year2: **Weds 24th October**
Year3/Year4/Year5/Year6: **Thurs 25th October**
Please return reply/Payment by Friday 19th October.

Thank you to everyone who has already volunteered to help out. If anyone else can help out, please let us know.

Christmas Fair

If anyone would like a stall booking or know someone who would be interested please let us know. We already have a handmade cushion stall, handmade bracelets and brooches and cake stall confirmed. Café and our jam jar tombola will also be there. Further details will follow.....

Quiz night: Thurs 15th November 8pm at the Weavers. £5 per person for entry which includes pizza at half time. Get your friends together, think of a team name and practice your general knowledge. Entry forms will be out in book bags soon.

Survey

Look out for a link via the text service for a survey of 7 quick questions, looking for ideas on how to contribute any money we raise back to the school. What do you think the school needs to enhance your child/children's learning experience? Our aim is to spend the money on something which benefits the whole school. We are also meeting with the school council to get the children's ideas on what they would like to see. The more ideas the better.

**Remember to follow us on FACEBOOK –
Luddendenfoot Academy PFTA**